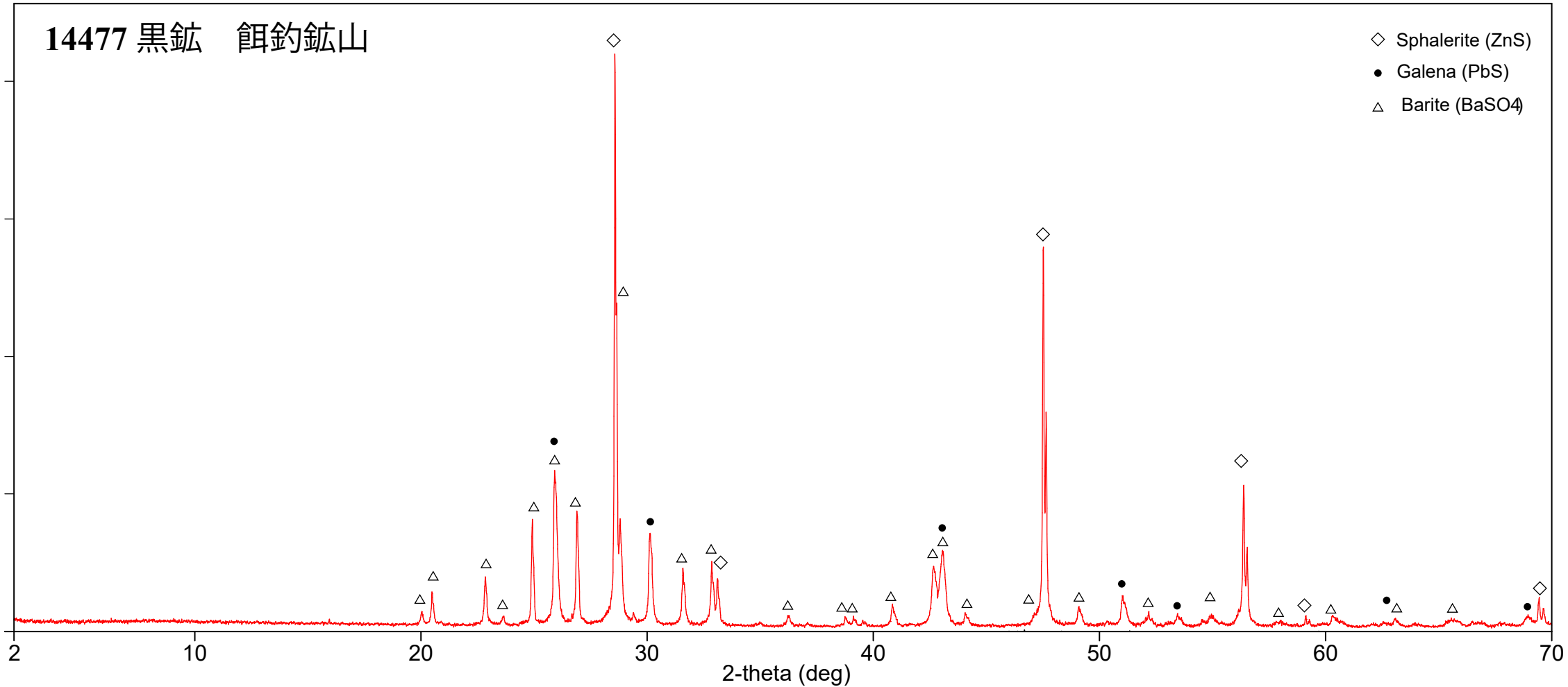


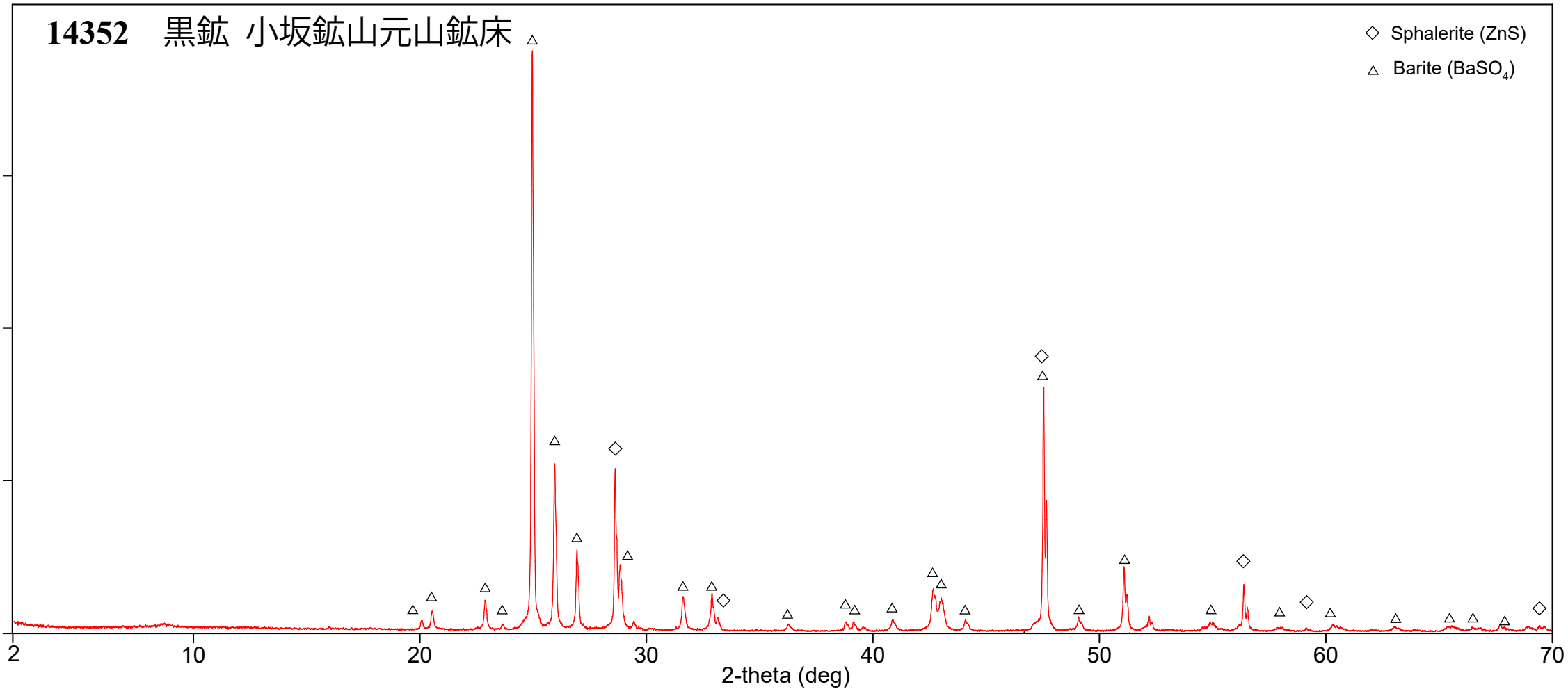
14477 黑鋅 餌釣鋅山

- ◇ Sphalerite (ZnS)
- Galena (PbS)
- △ Barite (BaSO₄)



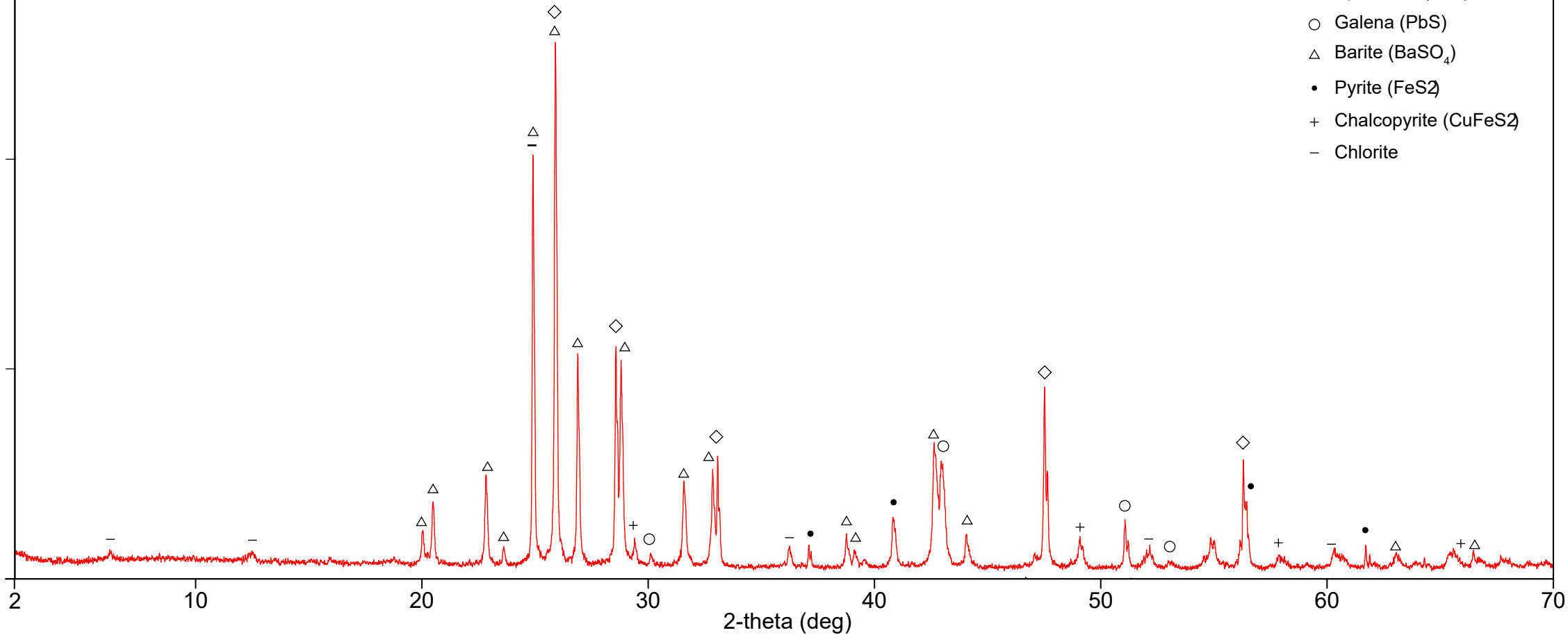
14352 黒鉱 小坂鉱山元山鉱床

◇ Sphalerite (ZnS)
△ Barite (BaSO₄)



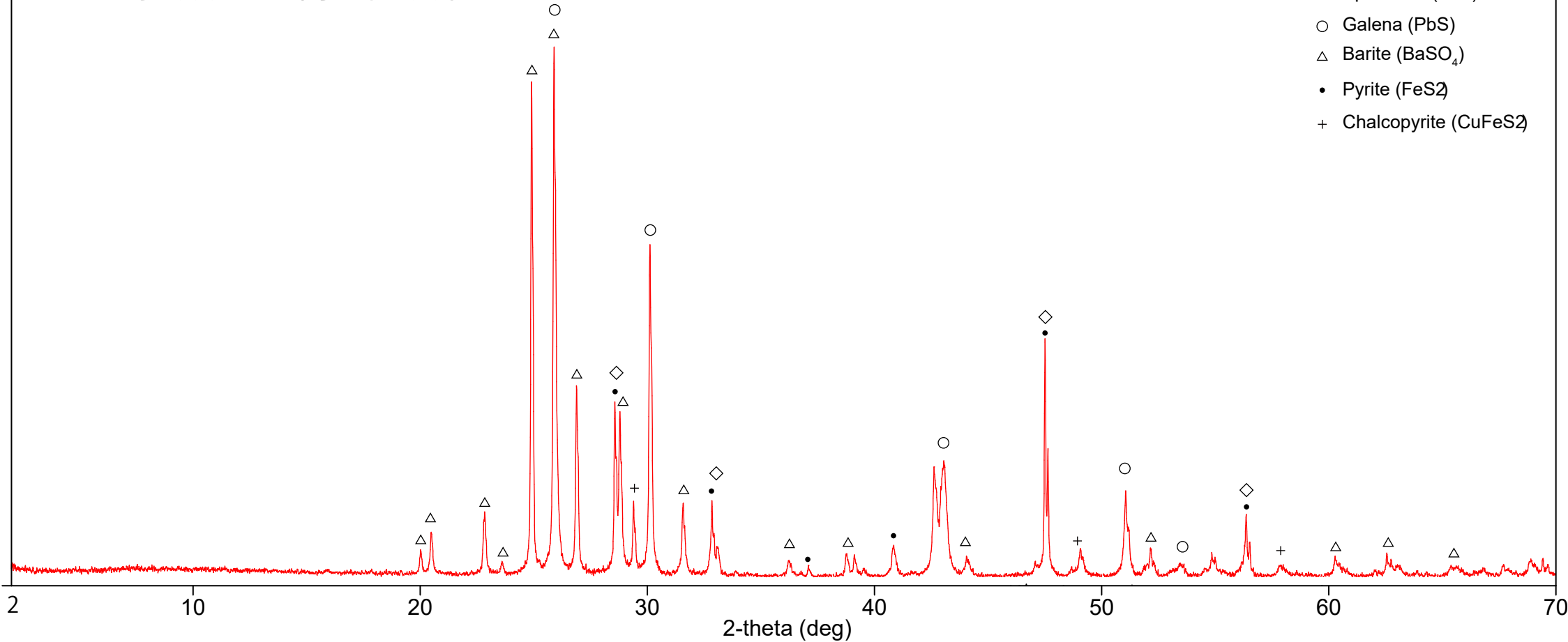
14207 黄鉱 相内鉱床

- ◇ Sphalerite (ZnS)
- Galena (PbS)
- △ Barite (BaSO₄)
- Pyrite (FeS₂)
- + Chalcopyrite (CuFeS₂)
- Chlorite



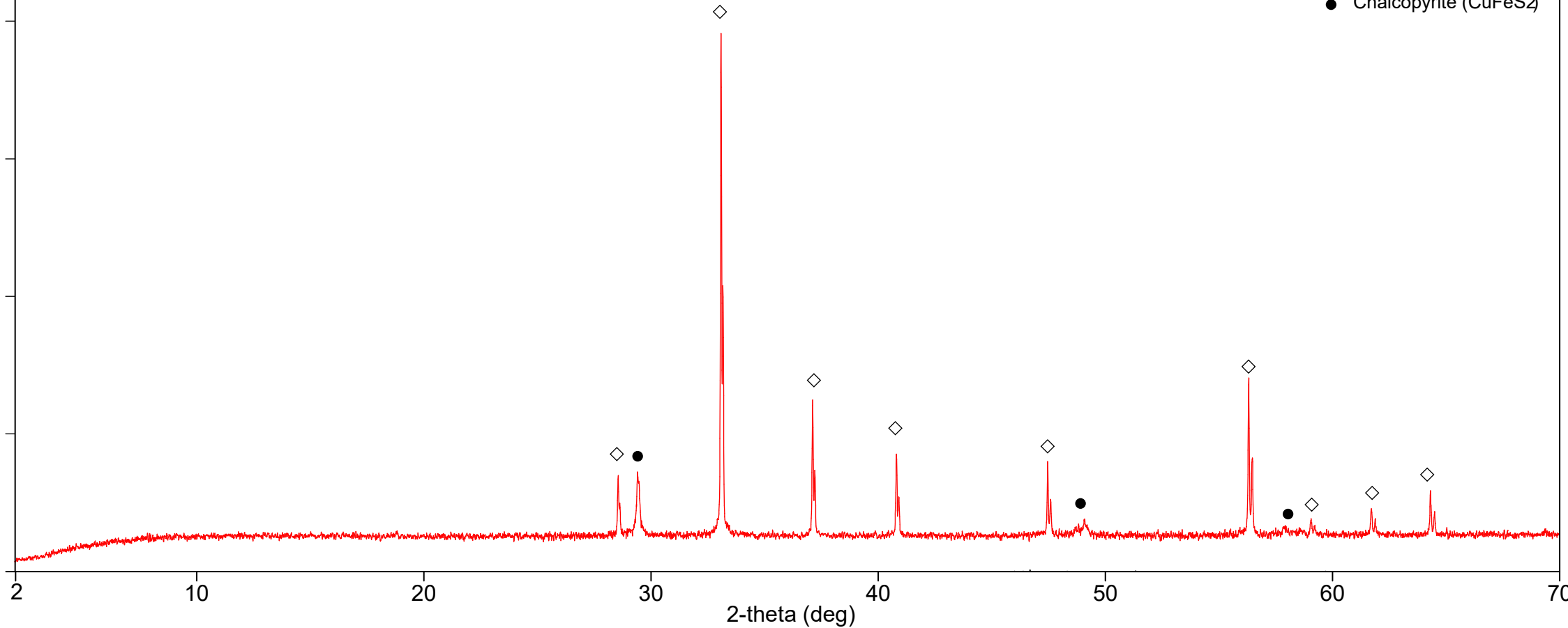
1465 小坂鉱山 内ノ岱鉱床

- ◇ Sphalerite (ZnS)
- Galena (PbS)
- △ Barite (BaSO₄)
- Pyrite (FeS₂)
- + Chalcopyrite (CuFeS₂)



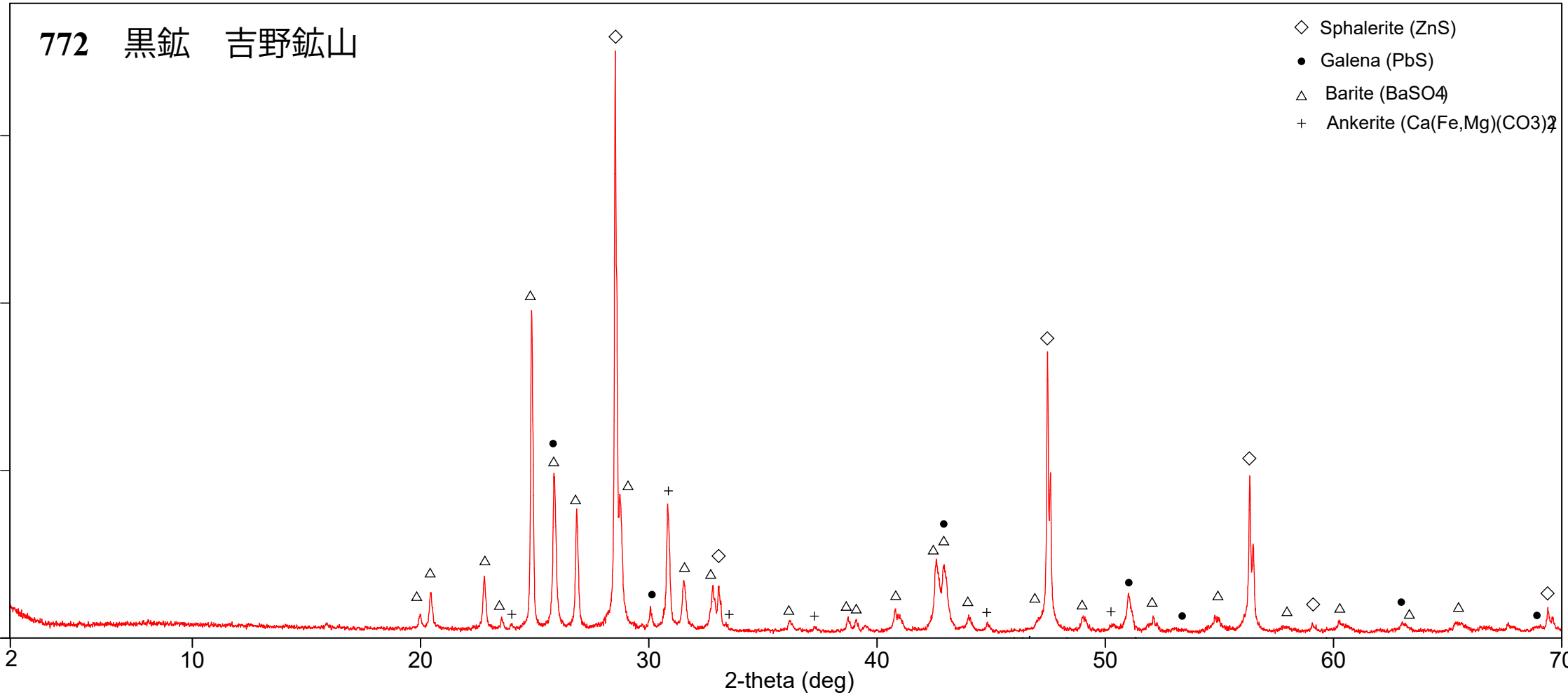
1475 黄鉱 小坂鉱山 元山鉱床

- ◇ Pyrite (FeS₂)
- Chalcopyrite (CuFeS₂)



772 黒鉱 吉野鉱山

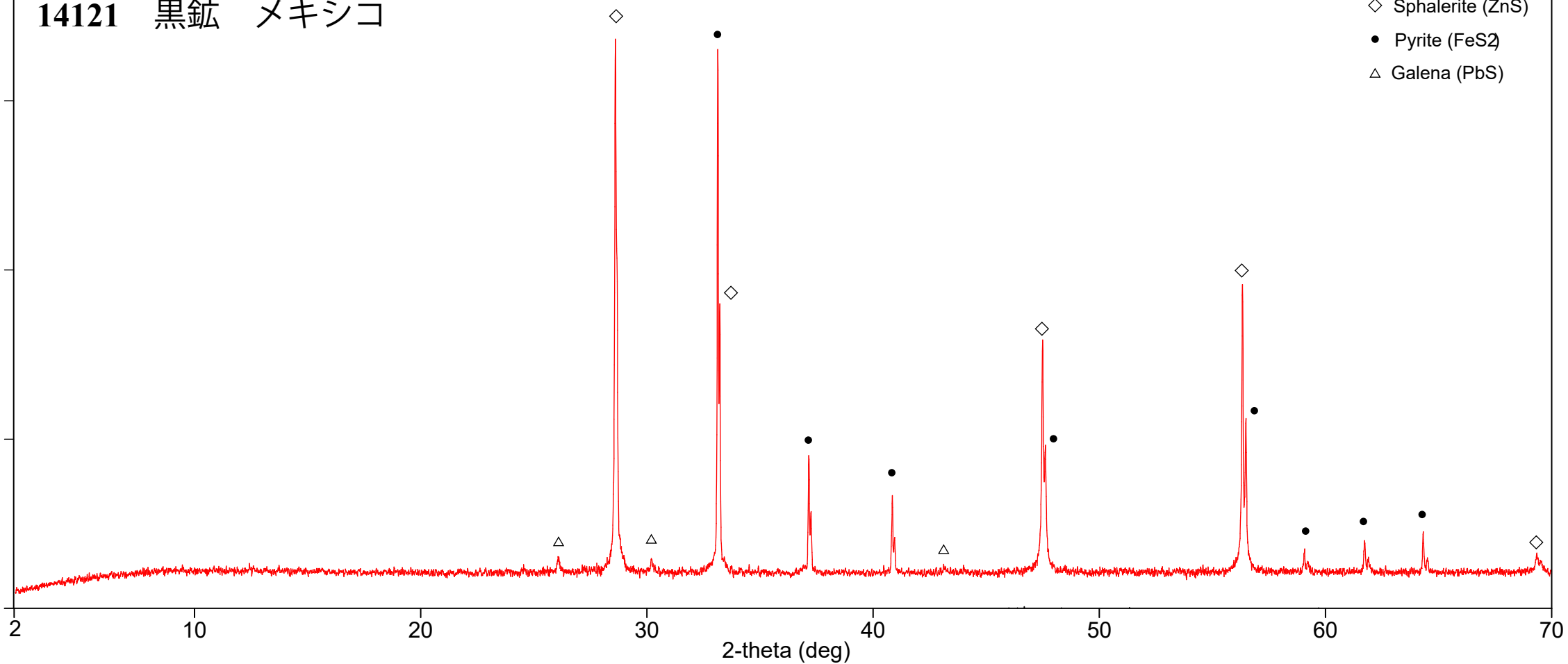
- ◇ Sphalerite (ZnS)
- Galena (PbS)
- △ Barite (BaSO₄)
- + Ankerite (Ca(Fe,Mg)(CO₃)₂)



2-theta (deg)

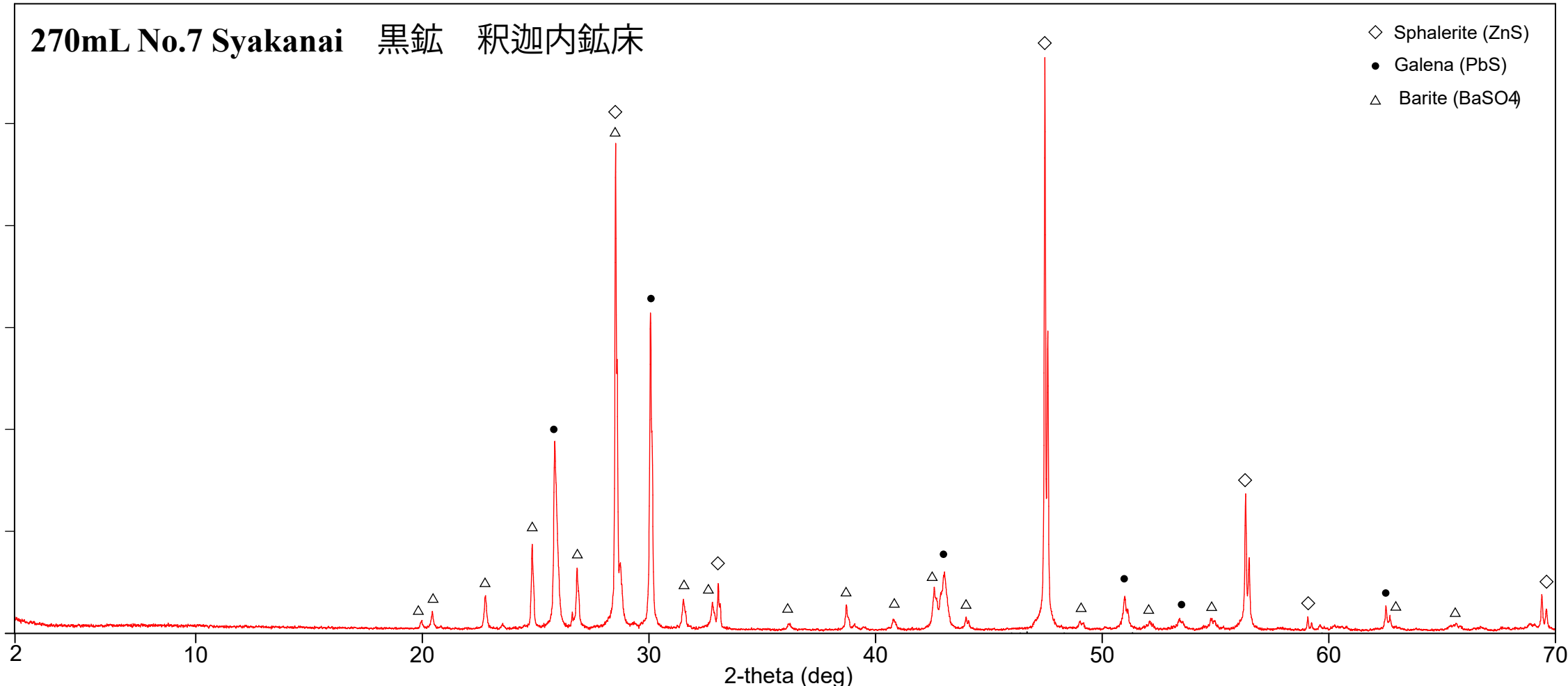
14121 黒鉱 メキシコ

- ◇ Sphalerite (ZnS)
- Pyrite (FeS₂)
- △ Galena (PbS)



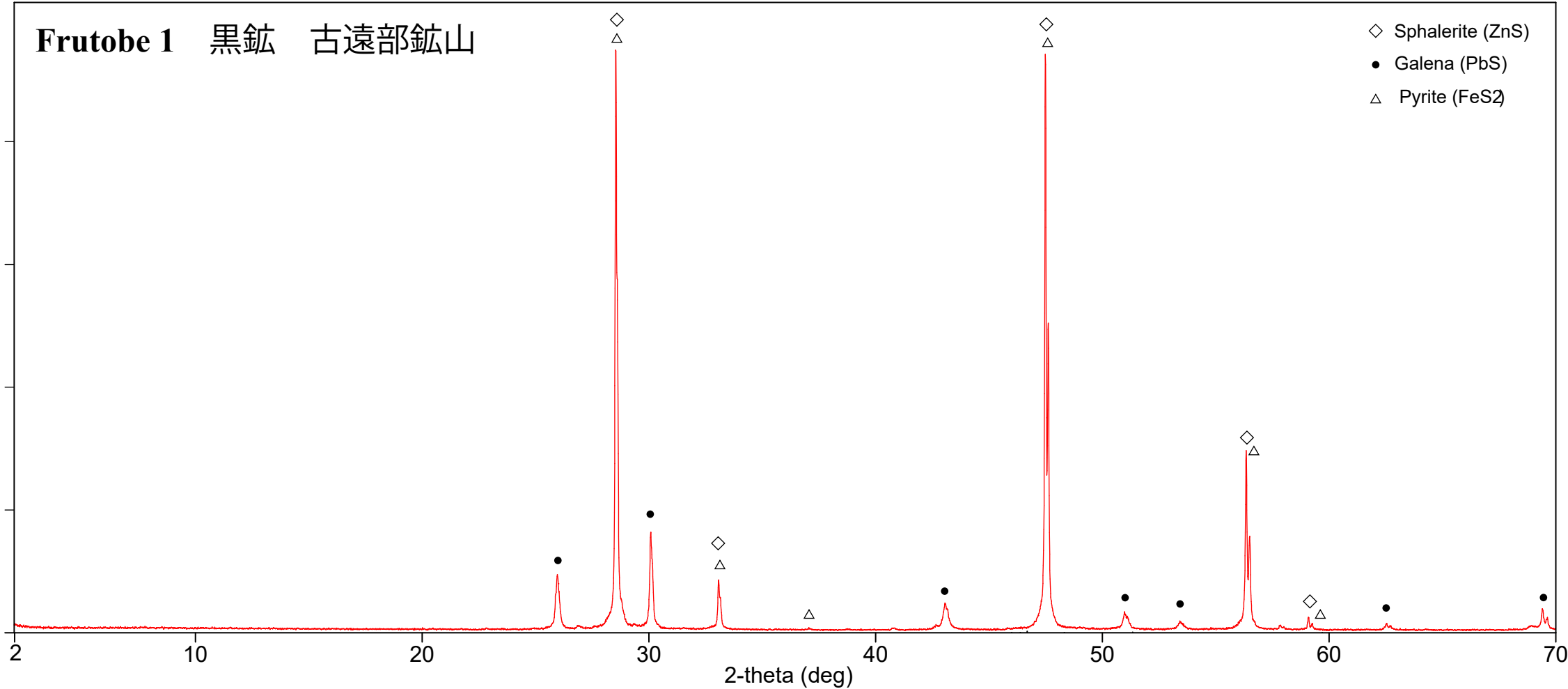
270mL No.7 Syakanai 黒鉱 釈迦内鉱床

- ◇ Sphalerite (ZnS)
- Galena (PbS)
- △ Barite (BaSO₄)



Frutobe 1 黒鉱 古遠部鉱山

- ◇ Sphalerite (ZnS)
- Galena (PbS)
- △ Pyrite (FeS₂)



Shimotai01 黒鉱 霜岱鉱床

- ◇ Sphalerite (ZnS)
- Galena (PbS)
- △ Barite (BaSO₄)

